

Camscanner

L1000 FZ530 FZ500

User manual



*Brief introduction

It is called camscanner, quite different from old fashion style. It is portable and multi-function. It can scan file, picture, object, etc. It is USB power supply can work all day lone. Easy to scan and save file on computer. It can be compatible with projector and show vivid display. It is a new concept camscanner.

*Packing accessories

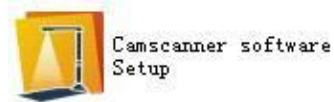
1. Camscanner
2. CD-ROM*1pc
3. USB2.0*1pc
4. User manual*1pc
5. Pad*1pc



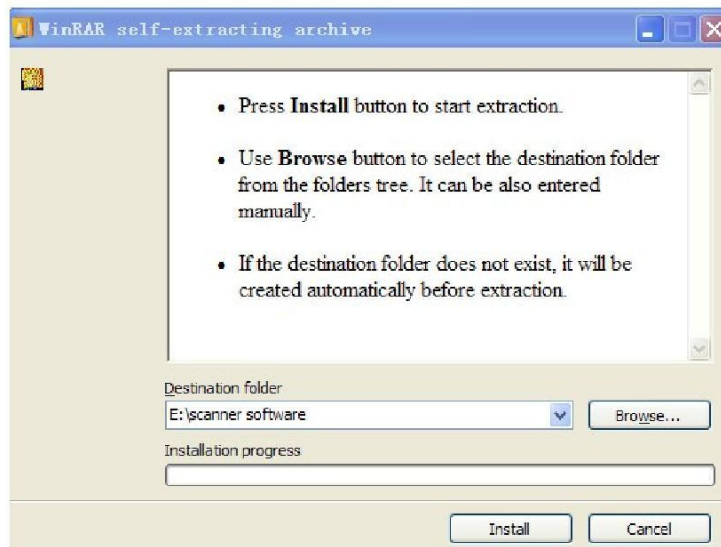
*Software installation

☺ camscanner software installation instruction

Step 1: open CD and find the software attached



Step 2: double click the set up icon to install software.



Step 3. Finish. Software icon on computer desktop



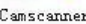
*Connect to PC

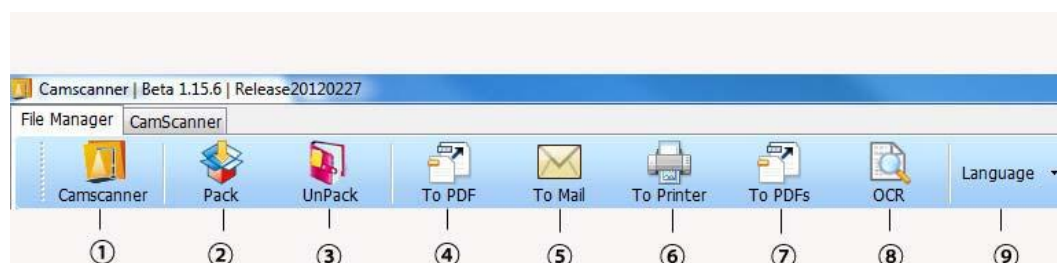
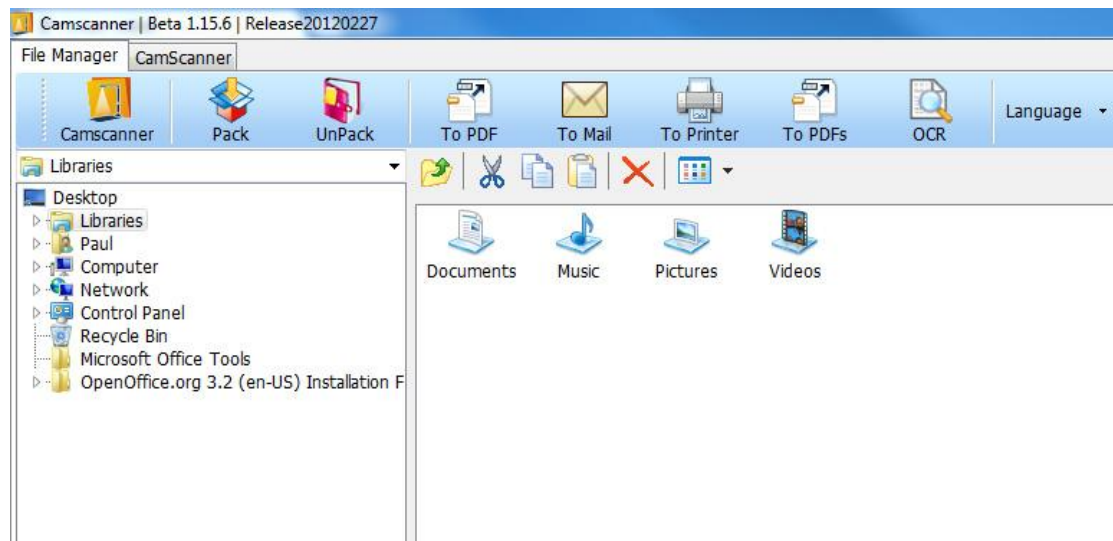
1. After finish software installation, you may connect scanner to PC by USB cable.
2. Put scanner on the correct position of the pad (marked with cross symbol).
3. Please put the file on the corresponding letter marked on the pad: A3/A4/A5/A6/A7

*Camscanner software introduction

1. Main interface



Double Click  icon on desktop into software interface.



1.1 Tool bar description

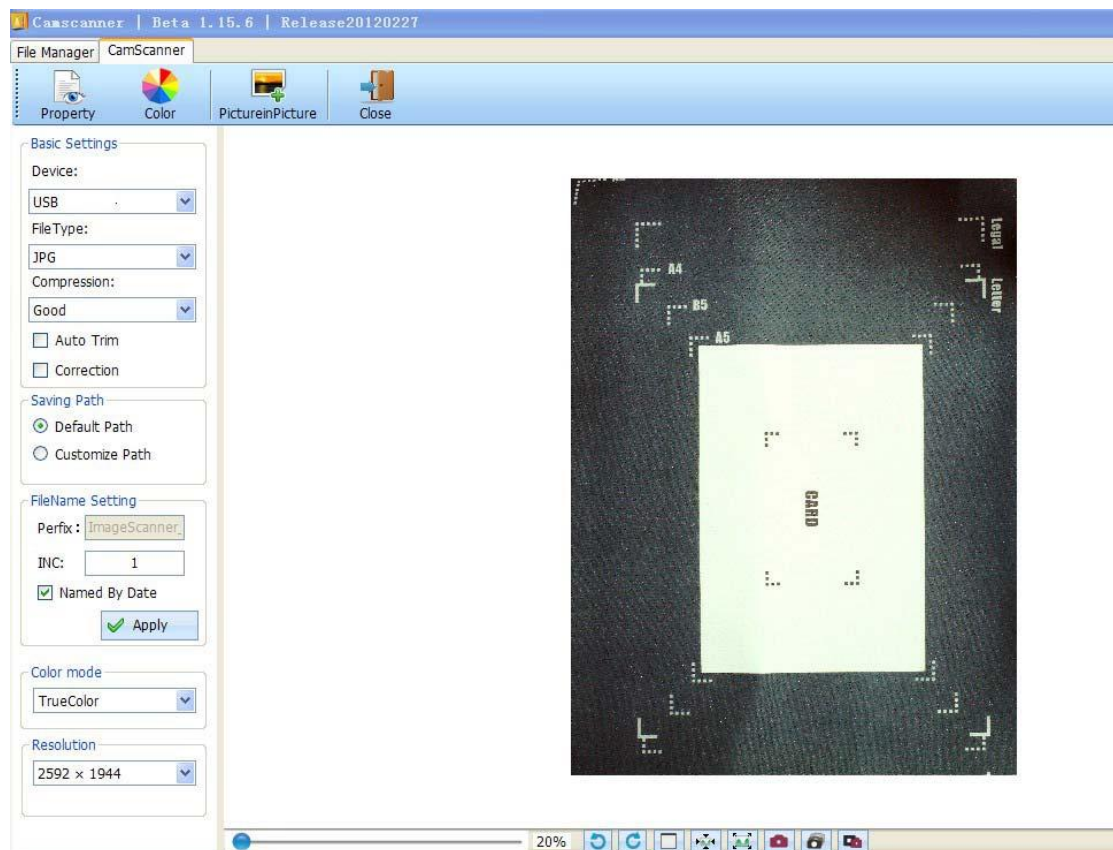
- ① click to enter scanning interface
- ② pack the files chosen

- ③ unpack the files packed
- ④ convert the scanned files chosen to PDF format.
- ⑤ email the scanned file chosen
- ⑥ print the scanned file chosen
- ⑦ combine the PDF files chosen
- ⑧ convert the scanned file to editable format(word/excel/text)
- ⑨ language option: English/Chinese/Japanese/Korean/Spanish/Russian
Portuguese/German/French/Turkish/polish/Italian/Arabic/

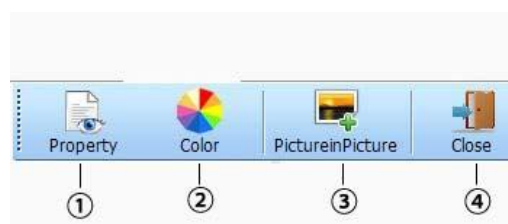
1.2 scanning interface description

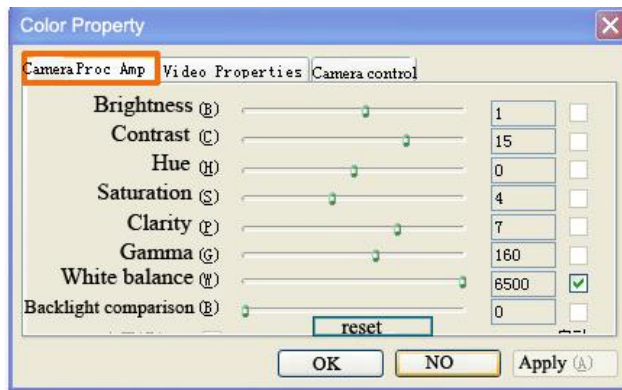


Click **CamScanner** icon on main interface into scanning interface



1.3 tool bar description





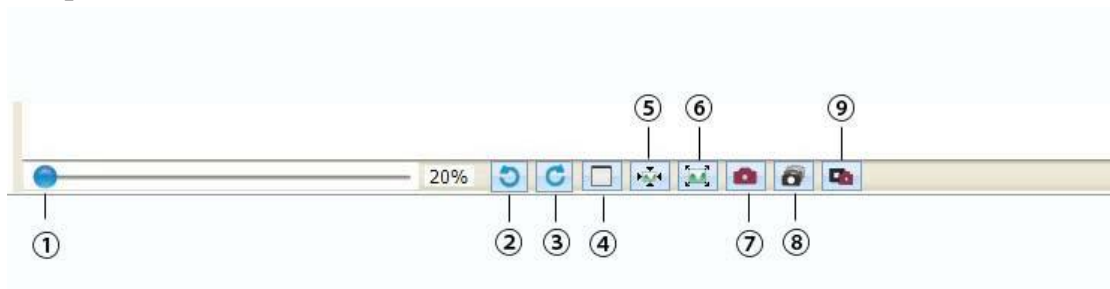
- ① lens property adjustment: frame rate/Color space and compression/Out put resolution
- ② color adjustment: brightness/contrast/hue/saturation/clarity/gamma/white balance/Backlight comparison/exposure/
- ③ picture in picture function is only available for dual lens device.
(Model No.P02-A4)
- ④ close scanning interface and return to main interface.

***Note: if the scanned file with heavy green or grey color, you may try to set the color →brightness→contrast according to the situation. You can get a better quality scanned file.**

1.4 basic setting before

Basic Settings		setting before scanning
Device:	USB	scan device,it is optional in dual lens device
FileType:	JPG	choose file format before scanning
Compression:	Good	option:JPG/BMP/GIF/PNG/TIFF
<input type="checkbox"/> Auto Trim		Auto cut black boarder
<input type="checkbox"/> Correction		auto correction (use correction will slow down the scanning speed)
Saving Path		
<input checked="" type="radio"/> Default Path		
<input type="radio"/> Customize Path		save file anywhere you want
FileName Setting		
Perfix :	ImageScanner	file named by time
INC:	1	file named by number
<input checked="" type="checkbox"/> Named By Date		
<input checked="" type="checkbox"/> Apply		
Color mode		
TrueColor		color mode:true color/grayscale/black & white
Resolution		
2592 × 1944		choose the file resolution you want

1.5 operation



① zoom in and zoom out

② rotate left 90°

③ rotate right 90°

④ actual size

⑤ fit size

⑥ full screen

⑦ capture (scan)

⑧ continuous auto capture

(Set the auto capture numbers and time)

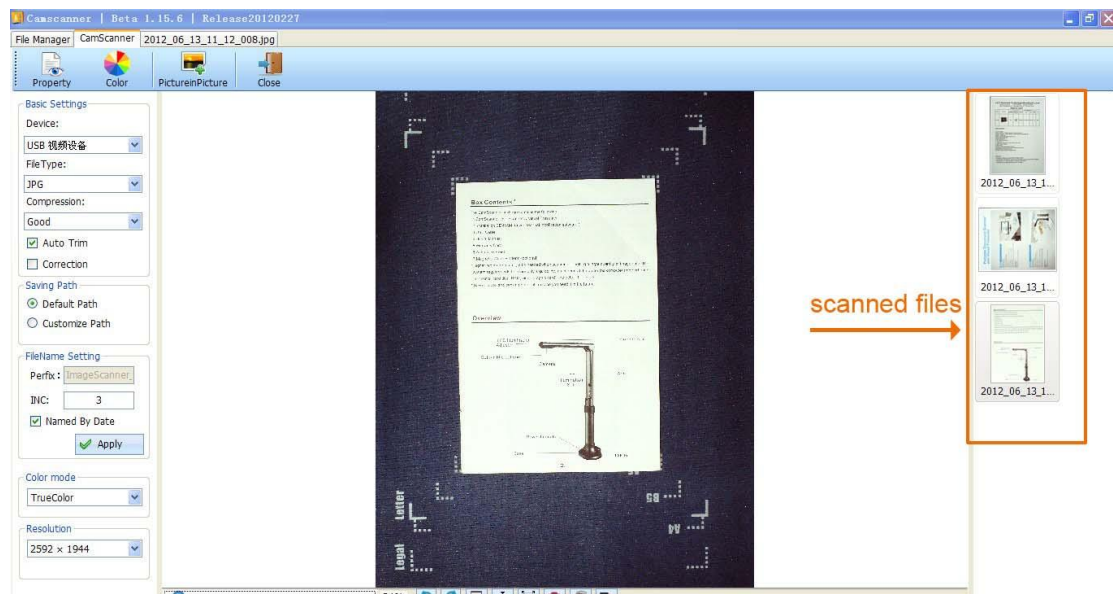
⑨ free capture

(click this icon → long click and drag to choose the size you want to capture

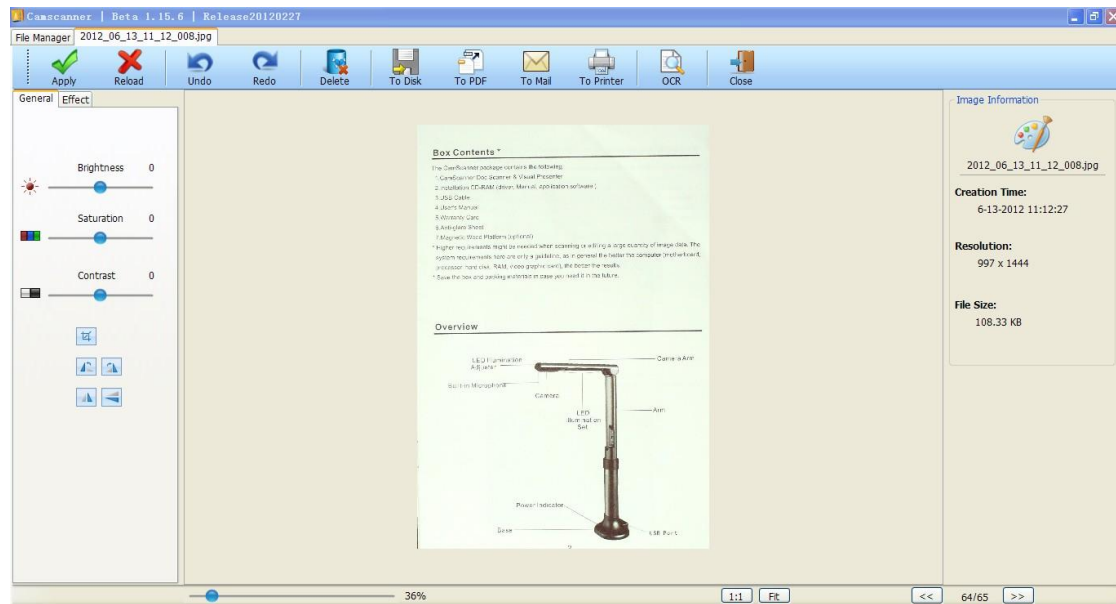
→ double click finally)

2 Image adjustment

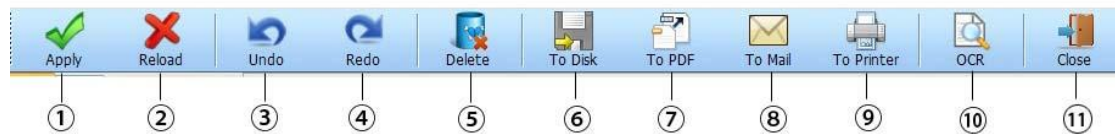
2.1 Click the scanned file into image adjustment.



2.2 image adjustment interface



2.2.1 Tool description



- ① apply: after make adjustment, do not forget to apply.
- ② reload: image can return to the initial situation
- ③ undo: return to last step
- ④ redo: repeat this step
- ⑤ delete the current image
- ⑥ to disk: save the current image to any place you like
- ⑦ to PDF: save the image as PDF format
- ⑧ to mail: email the image directly(outlook)
- ⑨ to print: print the image directly(make sure the printer has been connected to pc properly)
- ⑩ OCR: convert image format to editable format(text/word/excel)
- ⑪ Close image adjustment interface.

2.2.2 image adjustment

① ②

General Effect

Brightness 0

Saturation 0

Contrast 0

it is better not to crop here that will reduce the image quality

rotate the image

adjust brightness if the image looks dark or light

after adjust brightness make a little contrast looks better

②

General Effect

Gray

Image binaryzation

Opposite phase

Relief

Sharpen

image effect

2.2.3 Adjust image size

Zoom in, zoom out, fit size, actual size.

36%

1:1 Fit


2.2.4 Image information

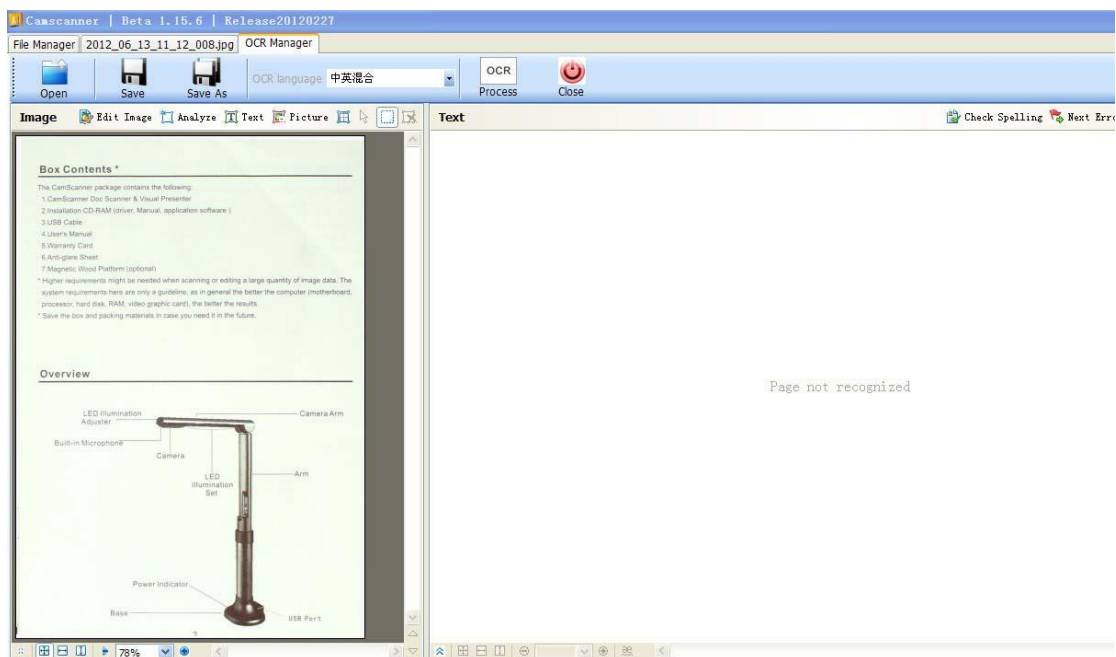


3 OCR (Optical Character Recognition) interface

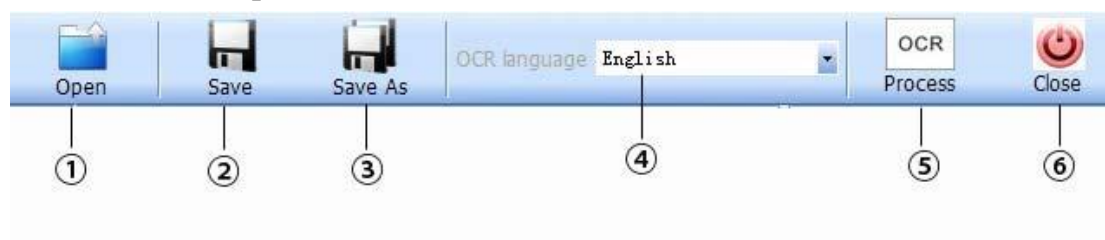
After finish image adjustment, do not forget to apply.



If you want to do OCR, click  icon into OCR interface.




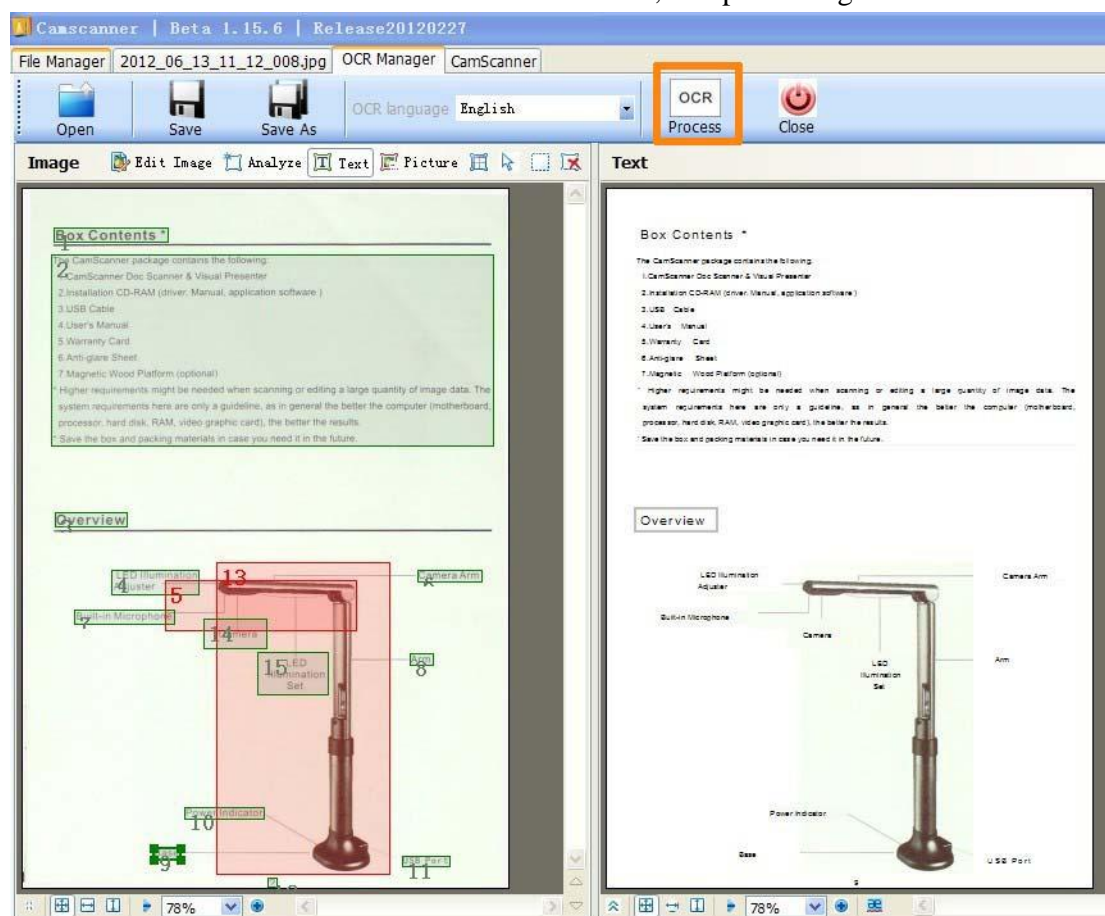
3.1 Tool bar description

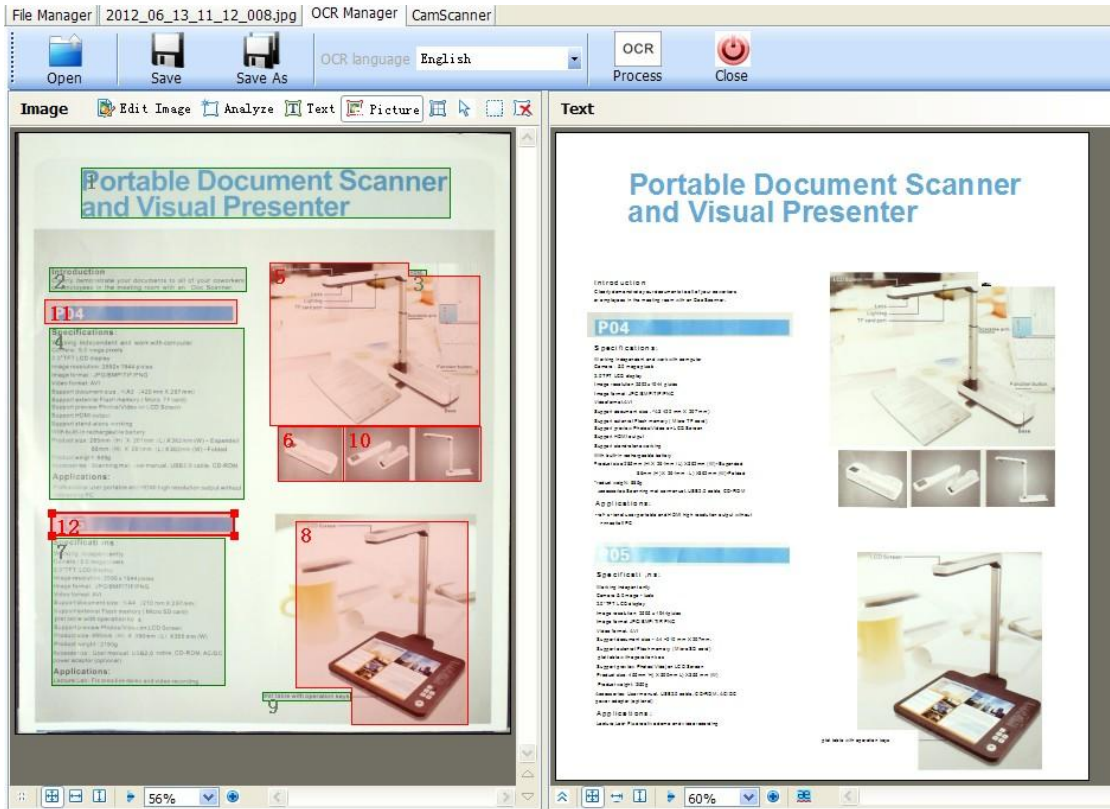


- ① open the file you want to make OCR
- ② save the OCR file in text/excel/rtf format, if want to save in word format, just copy the editable text in the interface and paste in word will do.
- ③ save to the path you like
- ④ according to the language of the image and choose the corresponding OCR language.
Optional language: English/Chinese/Japanese/Korean/Spanish/Russian
Portuguese/German/French/Turkish/polish/Italian/
- ⑤ click OCR here, it will convert the image to editable file.
- ⑥ close the current image.

3.2 OCR process

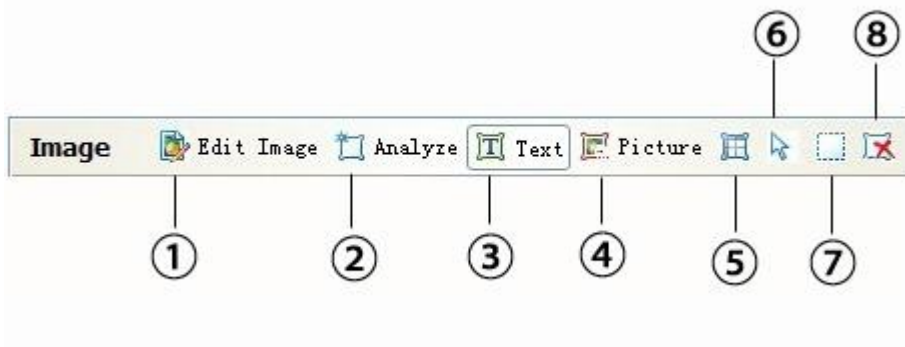
Click  icon. Please wait for 10 -15 seconds, it is processing.



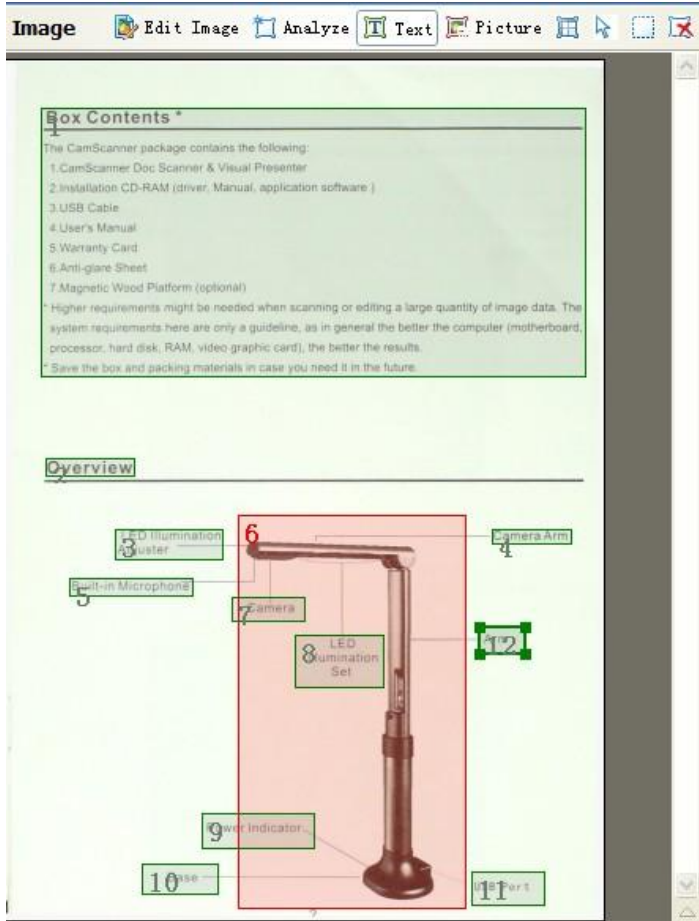
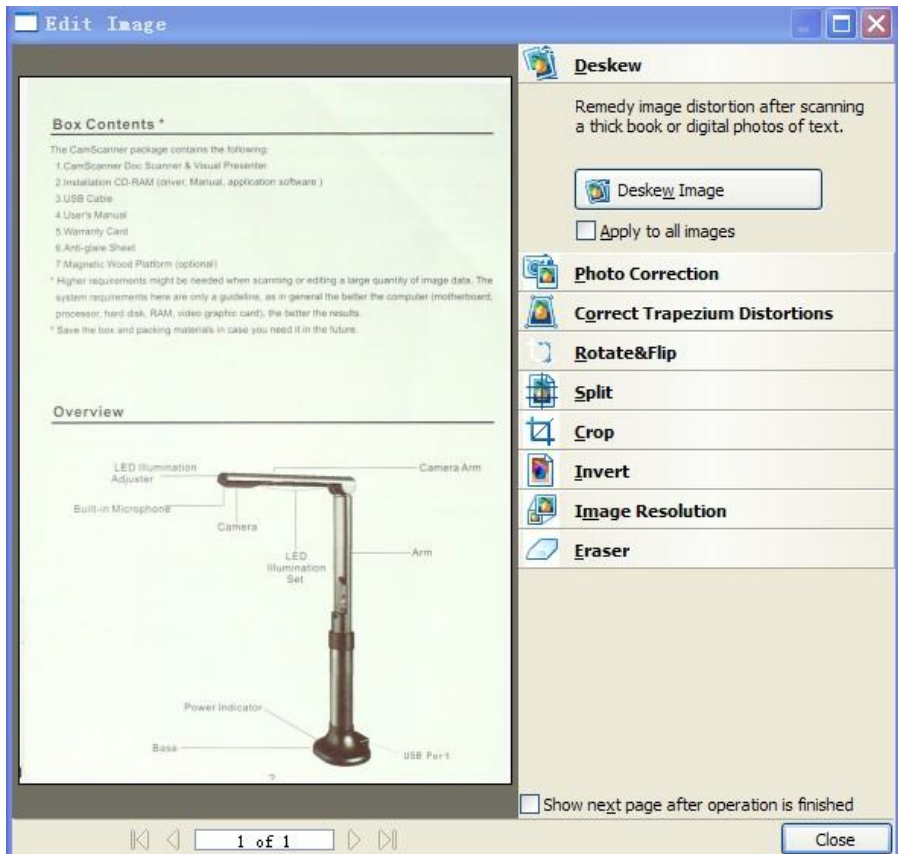


4.2.1 Auxiliary function (just for your reference)

In usual situation, click OCR process icon to do OCR that will be ok. If the OCR result is not good, please try it again or you may consider use the auxiliary tool. Finally click the OCR icon to process.

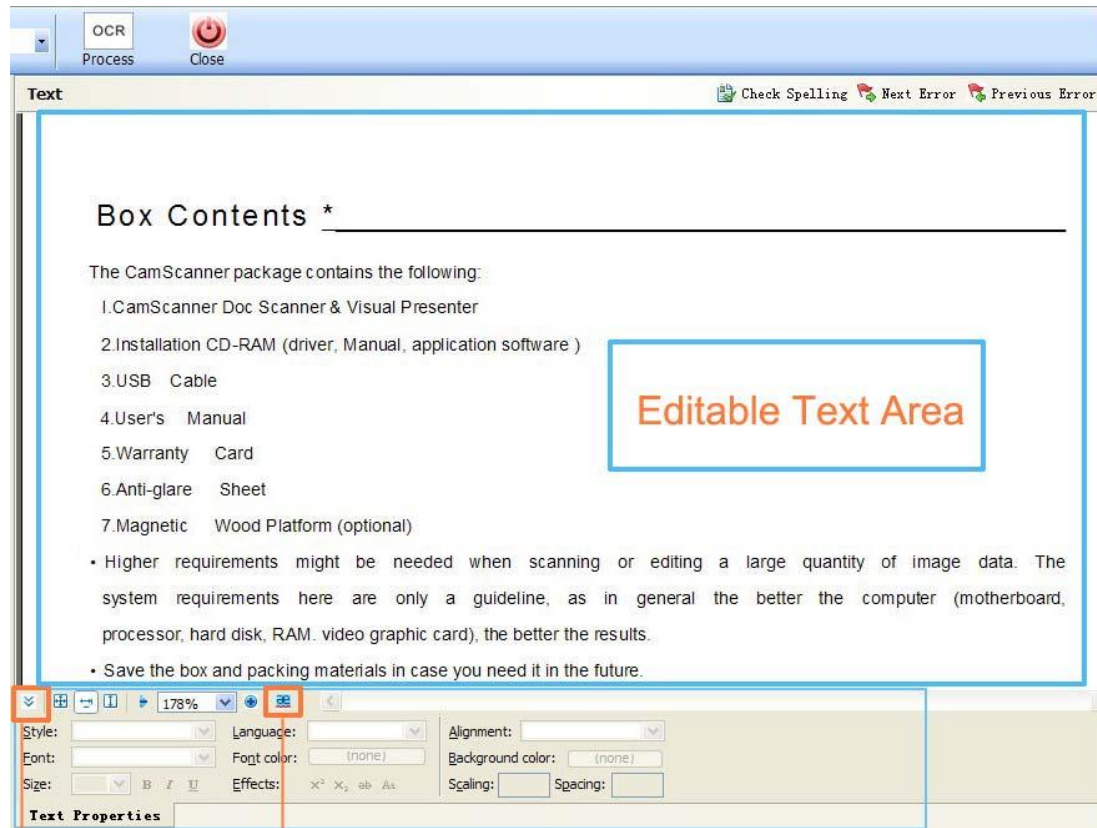


① you may edit image before OCR process (option)



- ②click analyze, preview the OCR range. There will be some green and white frame on the image. Green frame will recognize text. Red frame will recognize picture
- ③text: click and drag to choose the part you want to do OCR④picture: click and drag to choose the picture you want to do OCR
- ⑤add the table
- ⑥adjust the text and picture frame size
- ⑧delete the green or red color frame.

3.2.2 Text adjustment



click it to check the OCR error

click it on,it can adjust text style/language/font/color etc.

***Problem & Solution**

Problem	Solution
Can not find device	*if use desktop, please try to connect to the back USB port of the computer case. *close software and pull out USB cable then connect again.
Black screen	*open software if display black screen, please wait for 5 seconds. It is activating scanner lens. it will be getting bright *close software and pull out USB cable then connect again.
Green Scanned file	*It is better not to turn on LED light of the scanner if the room is light enough. *please use the scanner pad, it can focus light and make a better scanning quality

***Specification**

Product profile	Folded/stand up
applications	Scanning, visual presenting
speed	Instantaneous, one click
Color depth	24bit
Paper size	LetterA3/A4/A5/legal and other
resolution	2592*1944, 2592*1944,3264*2488
model	FZ500,FZ530,L1000
Image format	PNG/JPG/BMP/TIFF/PDF
Video format	AVI
I/O connection	USB 2.0
Power source	Powered via USB cable
Image control	Brightness/exposure/sharpness/color/gain/hue/saturation
Lighting condition	Works under natural light or with built-in LED light

***System requirement**

Windows
<ul style="list-style-type: none">*Windows/Intel compatible personal computer Pentium 4 CPU or above*CD-ROM Drive*512 MB ram(1GB Recommended)*80GB free hard disk space or above.*USB port*Microsoft WIN 2000,WIN XP1,WIN XP2 ,Windows 7,VISTA*Video card that supports 16-bit color or greater

***Operational precautions**

Do not leave the equipment in direct sunshine or close to heating appliances.

- When the main unit needs cleaning, wipe it first with a damp cloth that had been soaked in solution of neutral detergent and tightly wrung; then dry it off with clean cloth. Never use volatile solvents such as paint thinner, benzene, insecticide, etc. on the unit as they may deform, discolor and damage it. Also do not immerse the unit in water, as it will result in breakdown.

- Read Instructions All the safety and operating instructions should be read before the appliance is operated.

- Retain Instructions The safety and operating instructions should be retained for future reference.

- Attachments Do not use attachments not recommended by the product manufacturer as they may cause hazards.

- Do not place this product in any humid, dusty, windy or vibrating location. Use this product in the following environmental conditions: Temperature: 0_C~40_C (32_F~104_F) Humidity: 30%~85% (No condensation)

- In handling (including setting up and storing) or carrying the camera, be meticulously careful not to give an impact on the camera head.

- Do not look into the lamp (LED) part directly at close range. It may damage your eyes.