

# GUIA DE INSTALAÇÃO CÂMERA IP CF210-H



# Instalando a câmera IP

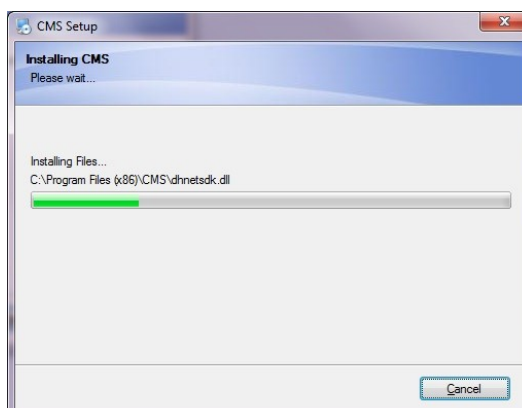
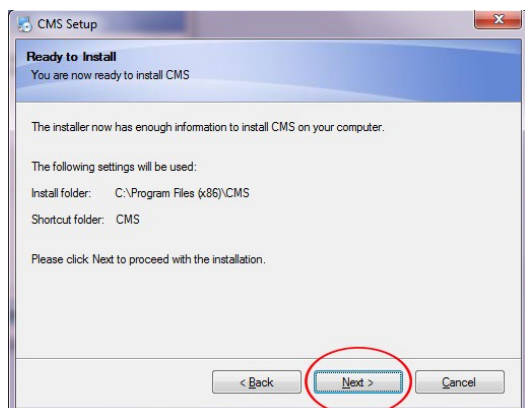
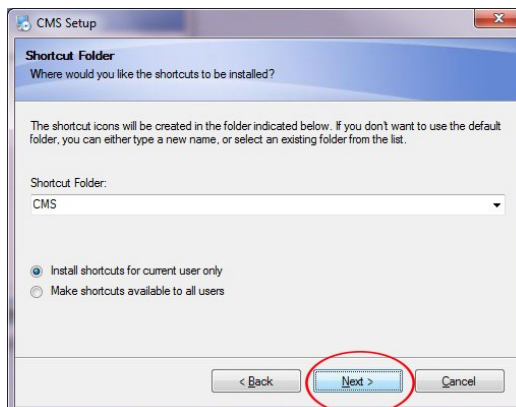
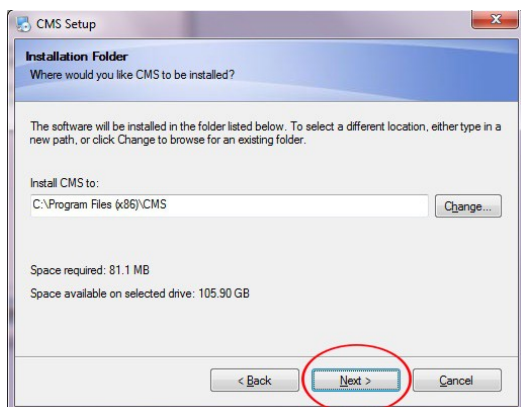
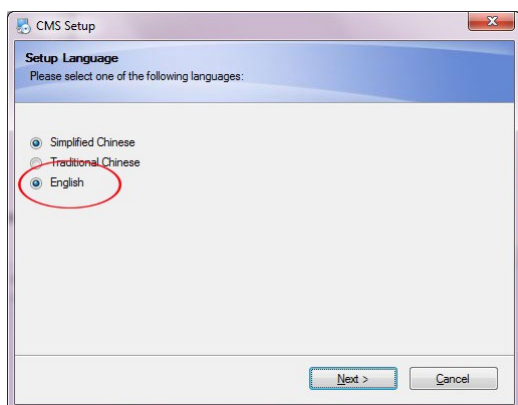
Instale o aplicativo

General\_CMS\_V3.1.0.4.T.20160218.exe

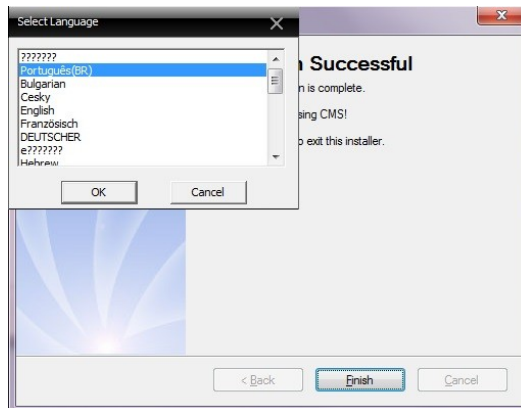
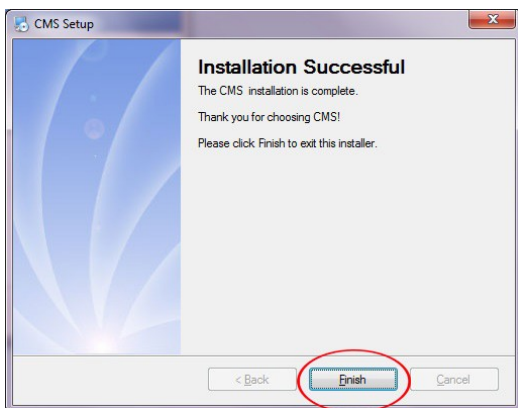
O arquivo está disponível em:

[http://www.fai-brasil.com/software/FAI/cameraIP/General\\_CMS\\_V3.1.0.4.T.20160218.exe](http://www.fai-brasil.com/software/FAI/cameraIP/General_CMS_V3.1.0.4.T.20160218.exe)

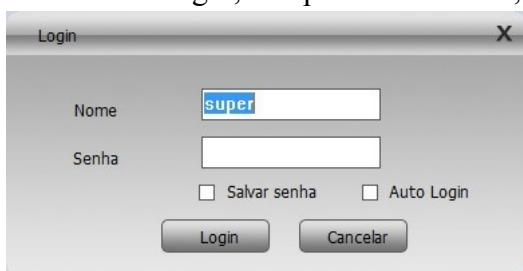
Selecione "English" e clique em "Next"



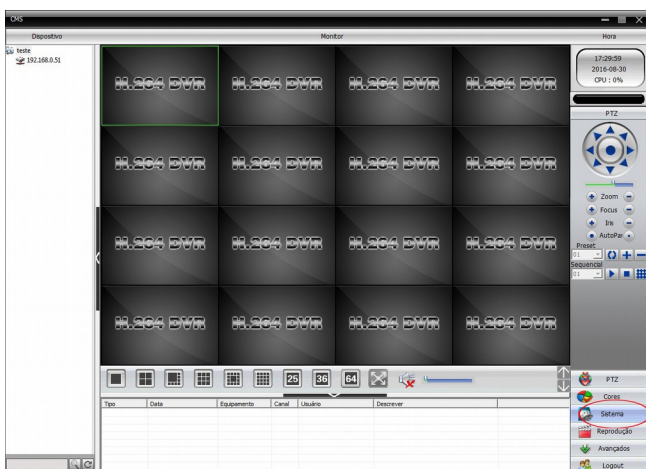
Quando concluir a instalação, escolha o idioma desejado.



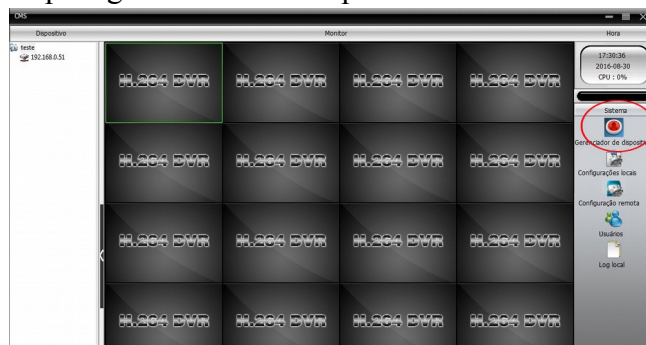
na caixa de login, não precisa de senha, apenas clique em "login"



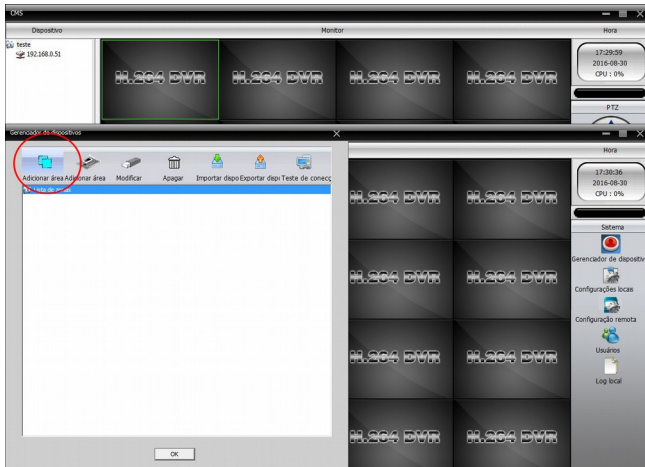
Selecione sistema:



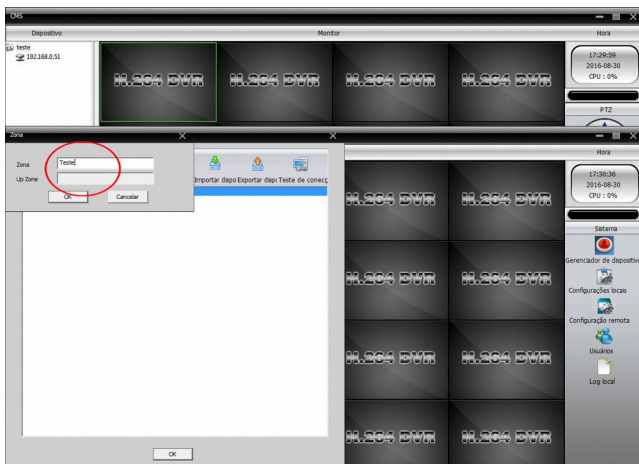
depois gerenciador de dispositivos



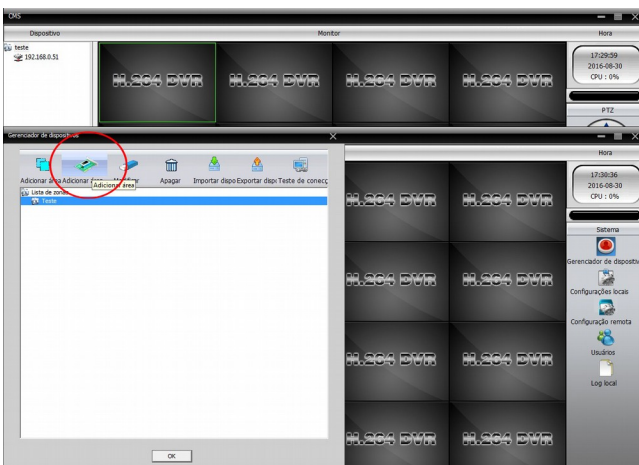
Selecione adicionar area



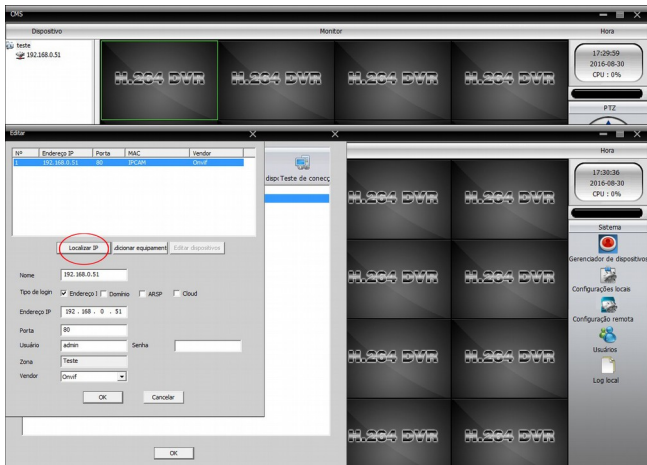
Digite um nome para a area



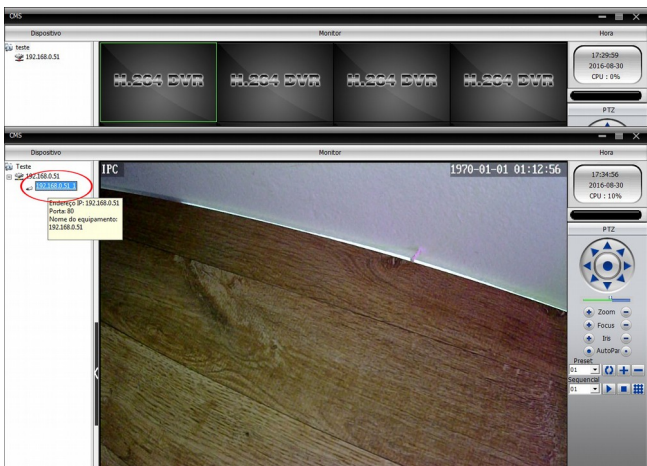
Selecione adicionar uma area



## Selecione Localizar IP



Clique no IP da câmera para visualizar,



para adicionar outras câmeras repita o processo de localizar IP.