
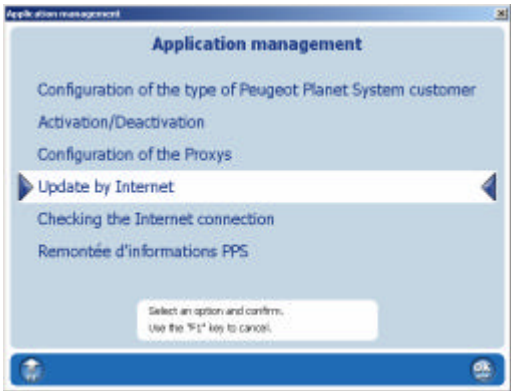


## PPO/PP2000/PPM Update Instructions


Updates are very important for your tool to have the latest ECUs and options or patches.

To update your application, restart Peugeot Planet Office (PPO) and click on either:

- The update icon
- The update menu

<p>The update icon is displayed on every PPO screen.</p>	
<p>The "Internet update" menu can be accessed by pressing F5 on any PPO screen.</p>	

**Your application must be activated in order to access this service!**

<p>Once your Internet connection has been tested, the window opposite will be displayed.</p> <p>You can select the version to download. Temporary versions are downloaded and installed automatically.</p>	
--	--

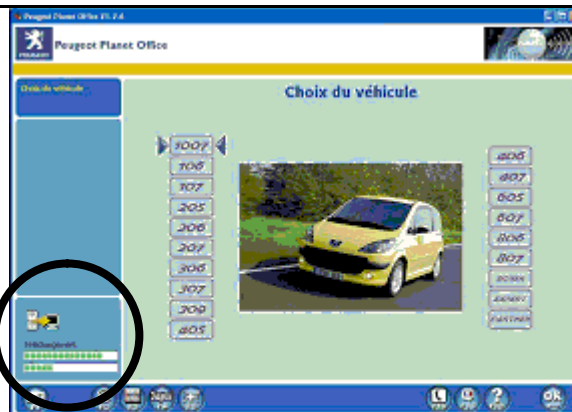
Once you have made your selection, you can monitor the progress of the download directly in PPO:



The upper toolbar shows the overall progress of your update downloads.

The lower toolbar shows the progress of one of the updates being downloaded.

The updates will be downloaded one after another, without any action necessary from the user.



When the download area turns green, this means that all the updates are ready to be installed.

To do this, exit PPO and then restart it. At start-up, PPO will display a message stating that it is updating the applications.

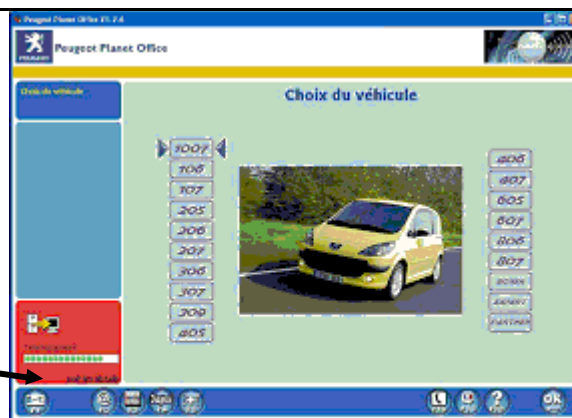
You can click on "more details" to get details on the steps taken.



If the download area turns red, this means that the download has been stopped.

This will usually be caused by a loss of Internet connection during the update.

You can click on "more details" to get details on the steps to take to continue the download.



**You can use the application during the updates, but any updates will only take effect once the download is complete and PPO has been restarted!**